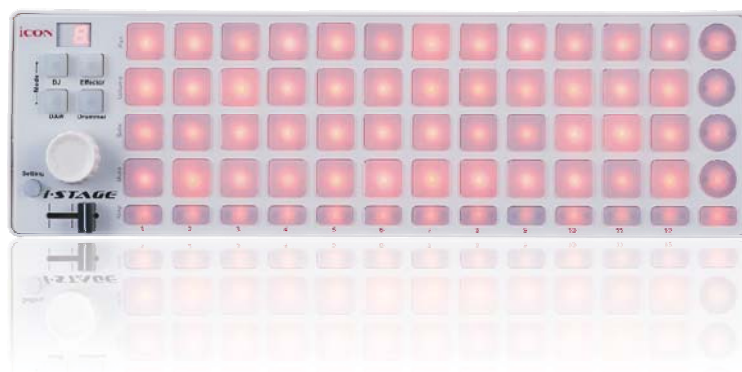


iCON

i-STAGE





Velocity-sensitive USB MIDI Matrix
& drum pads controller



Owner's Manual





	CAUTION RISK OF ELECTRIC SHOCK DO NOT OPEN RISQUE DE CHOC ELECTRIQUE NE PAS OUVRIR CAUTION: TO REDUCE THE RISK OF ELECTRIC SHOCK DO NOT REMOVE COVER (OR BACK) NO USER-SERVICEABLE PARTS INSIDE REFER SERVICING TO QUALIFIED PERSONNEL ATTENTION: POUR EVITER LES RISQUES DE CHOC ELECTRIQUE: NE PAS ENLEVER LE COUVERCLE. AUCUN ENTRETIEN DE PIECES INTERIEURES PAR L'USAGER. CONFIER L'ENTRETIEN AU PERSONNEL QUALIFIE. AVIS: POUR EVITER LES RISQUES D'INCENDIE OU D'ELECTROCUTION, N'EXPOSEZ PAS CET ARTICLE ALA PLUIE OU A L'HUMIDITE		 	<p>The lightning flash with arrowhead symbol within an equilateral triangle, is intended to alert the user to the presence of uninsulated dangerous voltage within the product's enclosure, that may be of sufficient magnitude to electric shock to persons. Le symbole clair avec point de foudre à l'intérieur d'un triangle équilatéral est utilisé pour alerter l'utilisateur de la présence à l'intérieur du coffret de voltage dangereux non isolé d'ampleur suffisante.</p> <p>exclamation point within an equilateral triangle is intended to alert the user of the presence of important operating and maintenance (servicing) instructions in the literature accompanying the appliance. Le point d'exclamation à l'intérieur d'un triangle équilatéral est employé pour alerter les utilisateurs de la présence d'instructions importantes pour le fonctionnement et l'entretien (service) dans le livret d'instruction accompagnant l'appareil.</p>
---	--	---	--	--

Important Safety Instructions

1. Read these instructions.
2. Keep these instructions.
3. Heed all warnings.
4. Follow all instructions.
5. Do not use this apparatus near water.
6. Clean only with dry cloth.
7. Do not block any ventilation openings. Install in accordance with the manufacture's instructions.
8. Do not install near any heat sources such as radiators, heat registers, stoves, or other apparatus (including amplifiers) that produce heat.
9. Only use attachments/accessories specified by the manufacturer.

Contents

Introduction	
What's in the package.....	1
Features	2
Front Panel Layout	3-4
Side Panel Layout	4
Getting Started	
Connecting your iStage controller.....	5-6
Installing iMap™ Software for Mac OSX	7
Installing iMap™ Software for Windows	8-9
Assigning MIDI functions with iMap™	10
iMap™ iStage software panel	10-11
Restore the factory default settings	11
Daisy chain your iStage to other i-series controllers	12
Specifications	13
Services	14



Introduction

Thank you for purchasing the ICON iStage USB MIDI controller. We sincerely trust this product will provide years of satisfactory service, but if anything is not to your complete satisfaction, we will endeavor to make things right.



In these pages, you'll find a detailed description of the features of the iStage, as well as a guided tour through its front and side panels, step-by-step instructions for its setup and use, and full specifications.

You'll also find a warranty card enclosed---please don't forget to fill it out and mail it so that you can receive online technical support at: www.icon-global.com. And so we can send you updated information about these and other ICON products in the future. As with most electronic devices, we strongly recommend you retain the original packaging. In the unlikely event the product must be returned for servicing, the original packaging (or reasonable equivalent) is required.

With proper care and adequate air circulation, your iStage will operate without any trouble for many years. We recommend that you record your serial number in the space provided below for future reference.

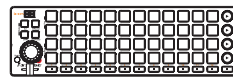
Please write your serial number here for future reference:

Purchased at:

Date of purchase:

What's in the package?

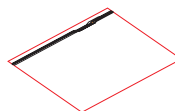
- iStage USB MIDI controller x 1
- Software CD x 1
- Quick Start Guide
- USB2.0 Cable



iStage



Software CD

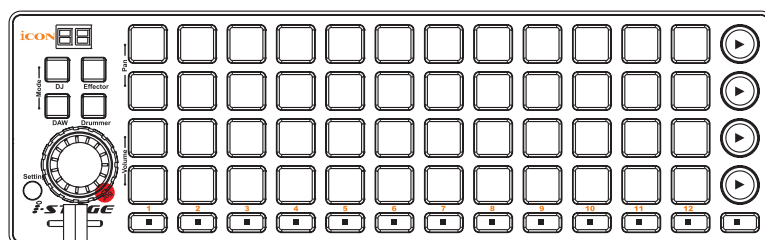


Quick Start Guide



USB2.0 Cable

Features

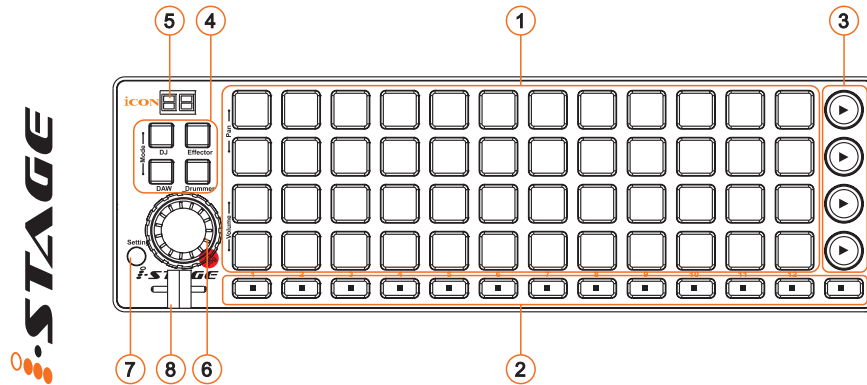


iSTAGE

Main features include:

- 3 sets of “4x4” matrix control buttons with dual color LED backlight
- 3 sets of “4x4” velocity-sensitive drum pads
- 17 buttons with red LED
- Buttons assignable for “Pan”, “Volume”, “Solo” and “Mute” functions in DAW mode
- 4 different modes including DJ / Effector / DAW and Drummer for different applications
 - DJ mode:** 12x4 matrix control buttons with “Stop” and “Play” buttons
 - Effector mode:** 12x4 assignable buttons for controlling different effect parameters
 - DAW mode:** 8 channel buttons for controlling pan, volume, solo and mute functions; 16 buttons for MMC and function buttons (DAW mode with built-in Mackie Control protocol)
 - Drummer mode:** 3 sets of 4x4 velocity-sensitive drum pads
- 2-segment LED display
- 1 encoder for jog wheel for fast scrolling and other controls
- 1 assignable fader
- iMap™ midi mapping software included for reassigning midi mapping
- Extremely compact and perfect match with MacBook™
- Class-compliant with Windows XP, Vista (32-bit), Windows 7 (32-bit & 64-bit) and Mac OS X
- USB bus-powered
- Available in black and white
- iCover - Different color aluminum cover available (optional)
- Customized laser-engraving service for iCover is available with online purchase (optional)

Front Panel Layout



- ① **3 set of “4x4” dual color backlit velocity-sensitive buttons**
 These dual color backlit velocity-sensitive buttons can be used for different purposes, depended on “Mode” selection, as follows:
 - a) **DJ mode** – 12x4 matrix control buttons for controlling clips;
 - b) **Effector mode** – 12x4 buttons for user-defined control effect plug-in/software;
 - c) **DAW mode** – 8 channels of assignable buttons for controlling pan, volume, solo and mute functions. 16 buttons for MMC and function buttons. In DAW mode, “Mackie Control” protocol is built-in;
 - d) **Drummer mode** – 3 sets of “4x4” velocity-sensitive drum pads with dual color backlight.
- ② **Stop buttons**
 These thirteen buttons activate the “Stop function” of the software for each corresponding channel from CH1 to CH12 with a “Master” channel at the last in DJ mode.
- ③ **Play buttons**
 These four “Play” buttons activate the “Play” function of the software in DJ mode.
- ④ **Mode buttons**
 There are 4 different modes available for selection. Select your desired mode for different applications.
- ⑤ **Display**
 Display your iStage control message.

Front Panel Layout

⑥ Jog wheel

This jog wheel is used for making selections, fast search, scrolling and co-control with buttons.

Tip: The jog wheel is very useful for fine/fast adjustments. Depending on the selected mode the jog wheel can be used for different purposes.

DJ mode: Scrolling up/down the clips simultaneously with your software.

Effector mode: Changing an effect parameter after you have selected a corresponding effect button.

DAW mode: Adjust the volume or pan for different channel by pressing the corresponding channel's "volume" or "pan" button.



⑦ Setting/Shift buttons

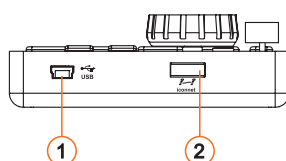
Press this button to set the number of rows of clips that you have created with your software. Press the button and rotate the jog wheel until the display shows the same number as your created clips row amount.

(Note: For this setting, make sure you are in "DJ" mode. To activate the DJ mode, press the "DJ" button among the mode selection buttons.)

⑧ Fader

This slider controls the cross fader in your software. Slide to control the transition between A & B.

Side Panel Layout



① USB port (B-Type)

Functions as a MIDI port to your notebook (or computer) and compatible software. Also provides power to your iStage.

② USB port

Use to daisy chain with the second unit of iStage or any i-series controllers such as iControls.

Getting Started

Connecting your iStage controller

① Connect the iStage to your Mac/PC via the USB port

Select a USB port on your Mac/PC and insert the wide (flat) end of the USB cable. Connect the cable's small jack end to the iStage. Your Mac/PC will automatically detect the new hardware and notify you that it is ready to use.

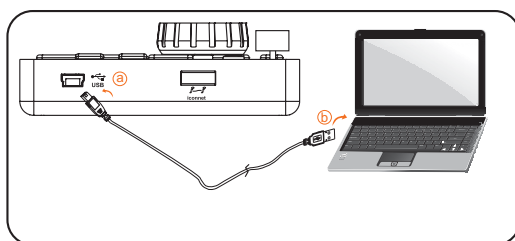


Diagram 1



Diagram 2

② Setup your software

Activate the ICON iStage controller in your DAW or MIDI software using "MIDI setup" or "MIDI devices".

(Note: Every application does this a little different, so refer to your software user manual for the settings.)

③ Select the desired mode

Select the correct mode according to your application. You may use all 4 modes to control different functions in the same software application.

For example: Using iStage at Ableton™ Live

DJ mode: Control the clips

Effector mode: Control the different effect parameters (pre-assign each button with your desired effect parameter.)

DAW mode: Control and adjust the pan, volume, solo and mute functions for each track for up to 8 tracks in total.

Drummer mode: Control the drum rack of the software

Getting Started

④ Assign the buttons accordingly

Assign the buttons according to your project for each mode.

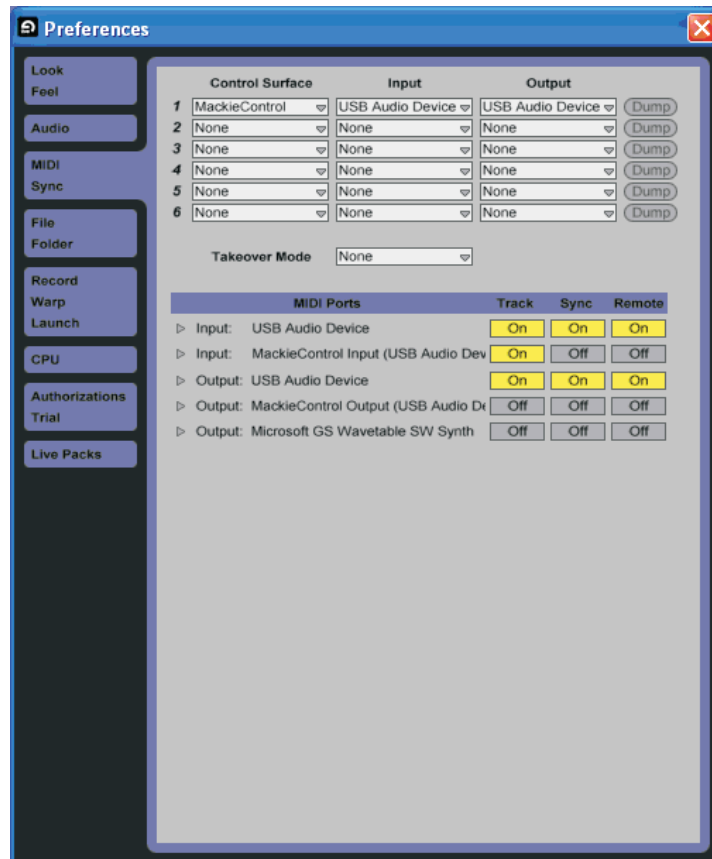
DJ mode: (1) Set the number of rows of clips. Press the “Setting” button and rotate the jog wheel to set the row number.

(2) Using the “MIDI learn” function, assign each button to match each clip for your whole matrix view.

Effector mode: Assign each button with your desired effect parameter.

DAW mode: Activate “Mackie Control” in the MIDI device setup (i.e. preferences). Select “USB Audio Device (2)” for input and output. Activate the MIDI ports for the USB audio device's input and output as below image shown.

STAGE



Drum Mode: Create “Drum Rack” in audio effect. Use the provided iMap software to map your drum note.

Installing iMap™ Software for MAC OSX

Please follow the procedures below step-by-step to install your iMap™ software to Mac OS X

- ① Turn on your MAC.
- ② Insert the Utility CD in your CD-Rom and double click “iSeries iMap” icon.

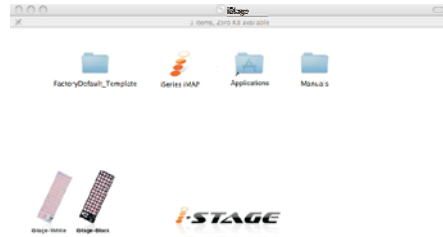


Diagram 1

- ③ iMap “Device select” window pop-up, click the device button accordingly to launch the iMap™ software.



Diagram 2

Installing iMap™ Software for Windows

Please follow the procedures below step-by-step to install your iMap™ software.

- ① **Turn on your PC.**
- ② **Insert the Utility CD in your CD-Rom**
After you have inserted the CD into your CD-Rom, an installation screen should appear as shown in diagram 1; click "iMap™ installation".
(Note: If the installation screen not appear automatically go to the CD folder and double click on "Setup")



Diagram 1

- ③ **Setup Wizard appear**
Setup wizard appears, please click "Next"



Diagram 2

- ④ **Choose Install Location**
Choose your preferred install location for iMap™ or use the default location and click "Next"

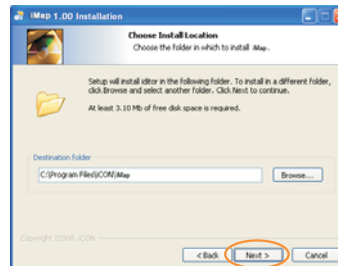


Diagram 3

- ⑤ **Select shortcut**
Select the start menu folder in which you would like to create the iMap™ shortcut. Then click "Next"

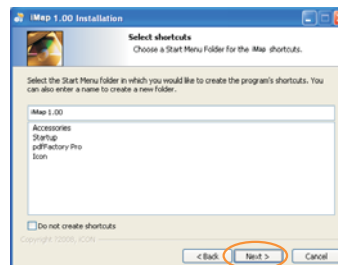


Diagram 4

Installing iMap™ Software for Windows(continues)

STAGE
000

⑥ Create a shortcut on your desktop

Please untick the box if you do not want to place a shortcut icon on your desktop for iMap™, otherwise click "Next"

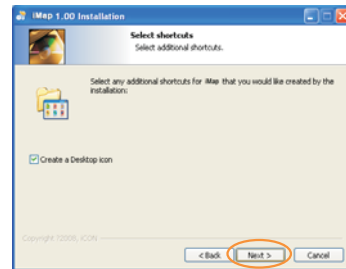


Diagram 5

⑦ iMap™ started to install

The iMap™ installation has now started, wait for it to finish. Then click "Finish"



Diagram 6

⑧ Installation finished

Click "Finish" to complete the iMap™ software installation.



Diagram 7

Assigning MIDI functions with iMap™

You can use iMap™ to assign the drum note easily for your iStage. Please launch the iMap™ software, a device selector screen will appear as shown in diagram 1. Then click the “iStage” button.

Note: You must activate “Drum” mode to drum note for each pad.

Note: If your iStage is not connected to your Mac/PC, the message “There are no MIDI input devices” will appear. Please connect iStage to your Mac/PC with the provided USB cable.

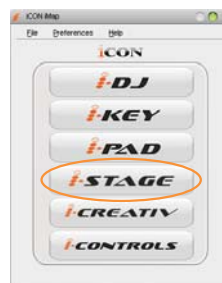


Diagram 1

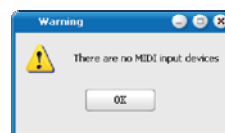
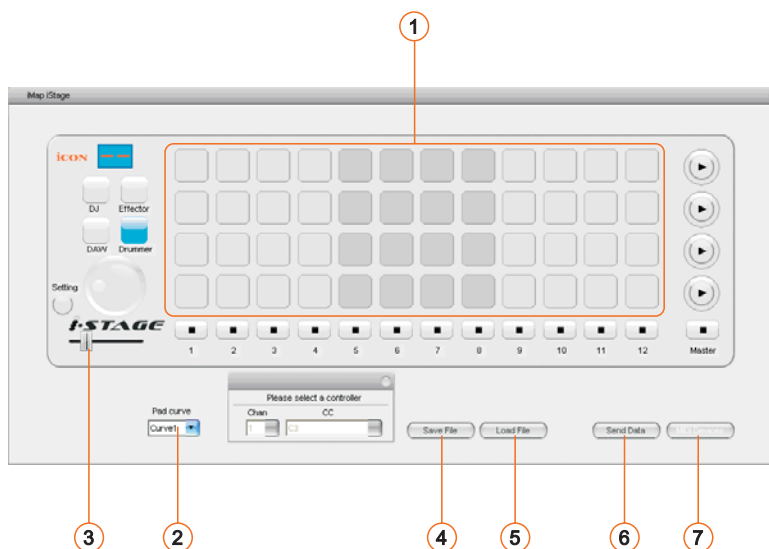


Diagram 2

iMap™ iStage software panel



iMap™ iStage software panel(continues)



① Assign the note value to the pad

Select your desired note value in the pull-down menu for the pad.

Note: The MIDI channel is set to Channel 10 for the drum pad in Drum mode.

② Select the pad curve

Select your desired pad curve from curve 1 to curve 4 in the pull-down menu.

③ Assign the MIDI channels and CC number to the cross fader

Select your desired MIDI channel from 1-16 and CC number for the cross fader.

④ “Save file” button

Click this button to save your current settings for the iStage. The file is an “.icon” file.

⑤ “Load file” button

Click this button to load a previously saved “.icon” setting file for your iStage.

⑥ “Send Data” button

Click this button to upload the iMap™ software settings to your iStage via USB connection.

(Note: You must have connected your iStage to your Mac/PC, otherwise the settings upload will not be successful.)

⑦ “MIDI Devices” button

Click this button, a MIDI device select window will appear as shown in diagram 1. Please select “ICON iStage” for the MIDI Out Devices.

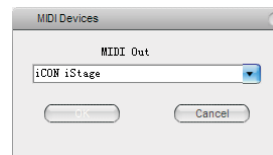


Diagram 1

Restore the factory default settings

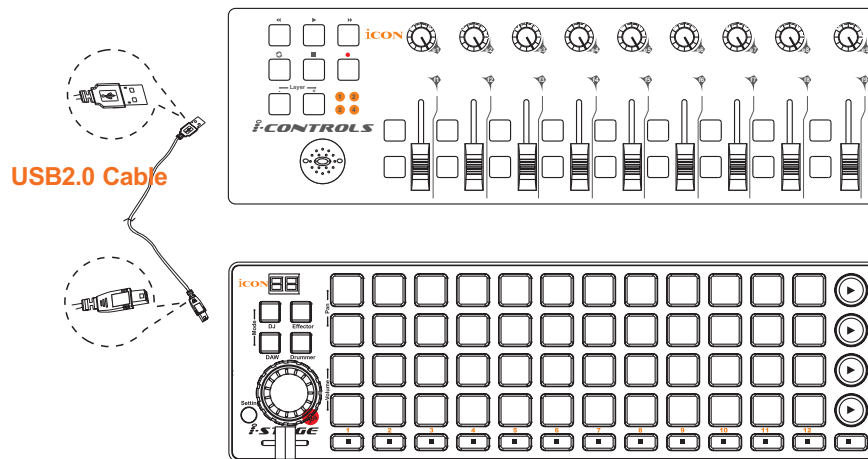
To restore your iStage settings to factory default. Simply import the “Factory Default” setting file into your iStage with iMap software. The “Factory Default” setting file is stored at the provided CD.

Daisy Chain with iStage or any i-series Controllers

You may daisy chain i-series controllers including iStage. As i-series controller is USB bus-powered the stability depends on the total power demand of the chain. Please visit our website for recommendations on daisy chain sequence for different i-series controllers.

- ① **Connect the first of the i-series controllers to your Mac/PC via the USB port**
Select a USB port on your Mac/PC and insert the wide (flat) end of the USB cable and the other small end (B-type USB pack) to i-series controller.
- ② **Connect the next of the i-series controllers**
Insert the wide (flat) end of the USB cable to the first i-series controller's second USB port and the other small end (B-type USB jack) to the second i-series controller's USB port.

Note: Due to the limitation of power supply via USB port, it is not possible to daisy chain two iStage units. For recommendations on the combination and daisy chain sequence of different i-series controllers, please visit the ICON website at the following link: www.icon-global.com



STAGE

Specifications

Connector:	To computer	USB connector (mini B type)
	To i-series controller	USB connector (standard type)
Power supply:	USB bus power	
Current consumption:	100mA or less	
Weight:	0.89kg (1.96lb)	
Dimensions:	325(L) X 99(W) X 20(H)	
	12.78"(L) x 3.78"(W) x 0.75"(H)	

Services

If your iStage needs servicing, follow these instructions.

1. Ensure the problem is not related to operation error or external system devices.
2. Keep this owner's manual. We don't need it to repair the unit.
3. Pack the unit in its original packaging including end card and box. This is very important. If you have lost the packaging, please make sure you have packed the unit properly. ICON is not responsible for any damage that occurs due to non-factory packing.
4. Ship to the ICON tech support center or the local return authorization.

U.S. OFFICE:

ICON Digital Corporation.
2222 Pleasant View Road,
Suite #1 Middleton,
WI 53562

Tel: 608-829-3450 Fax: 608-829-1972
infous@icon-global.com

ASIA OFFICE:

ICON International Digital Limited
Suite Nos. 7-10,
8th Floor, Sunley Centre,
No.9 Wing Yin Street,
Kwai Chun. N.T.

Hong Kong
Tel: 852-2398-2286 Fax: 852-2789-3947
infoasia@icon-global.com

For additional update information please visit our website at:
www.icon-global.com







www.icon-global.com

info@icon-global.com